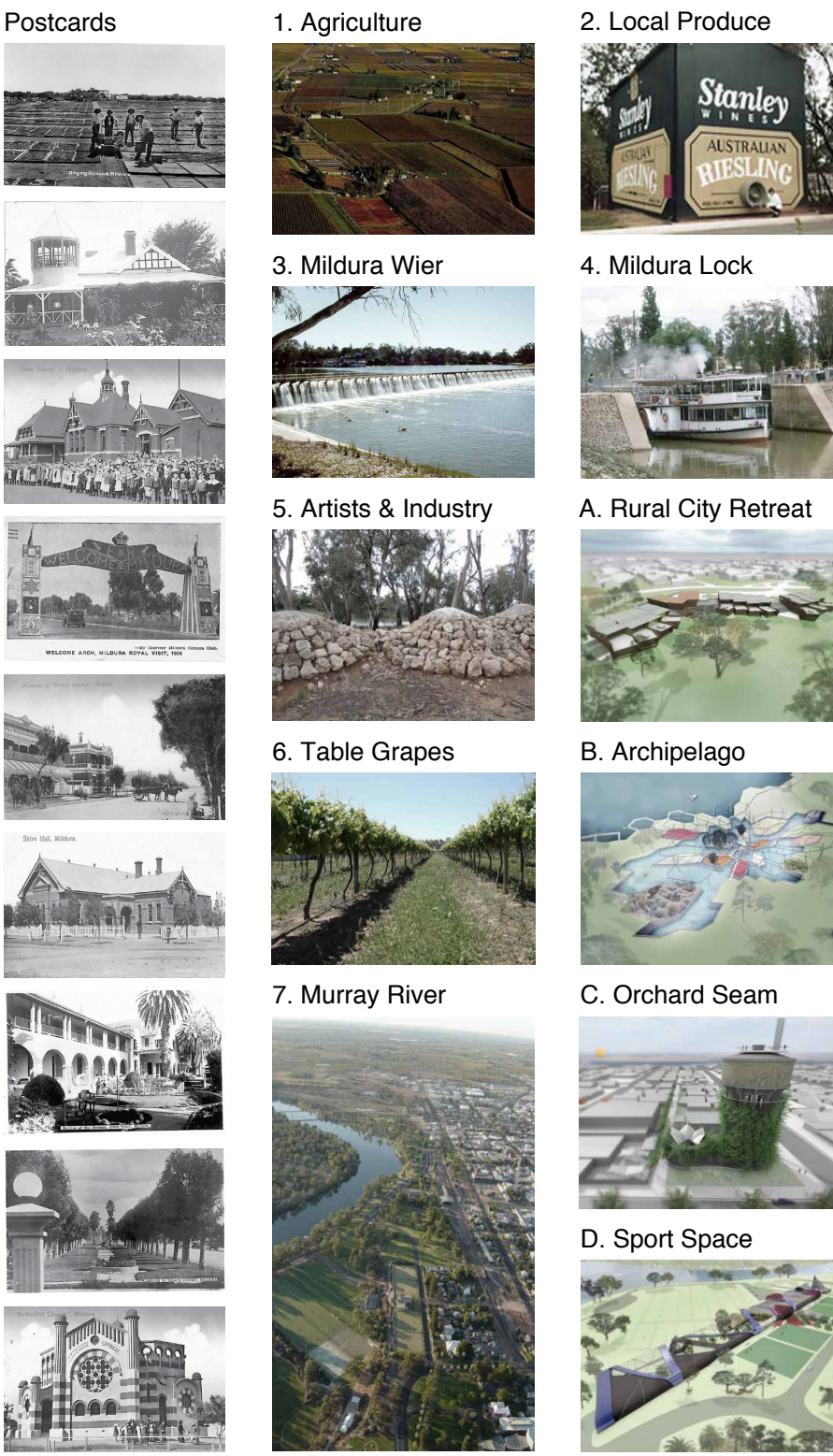
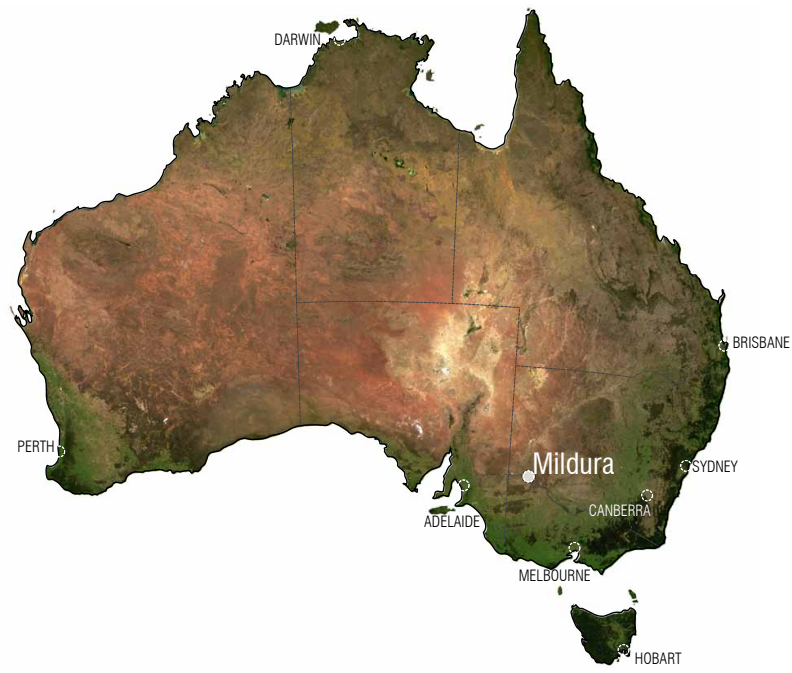


The Keys to Mildura.

Mildura, a town of some 30,000 residents, is one of Australia's most significant inland river cities. It is located six hours drive from Melbourne, five from Adelaide, on the North-West border of the state of Victoria. The River Murray is Australia's longest with a catchment covering 37% of its land area. Murray waters irrigate the Sunraysia food bowl, with Mildura being the principal service centre for this region. As Mildura's population is growing and it's tertiary sector is becoming more important. Tourism to the region is also increasing and is a significant contributor to the economy. As the town grows and changes, there is increasing interest in establishing a corresponding coherent and contemporary urban realm. Rich spatial qualities and experiences are seen as increasingly valuable assets for a city to attract and support a diverse populace. Mildura is a low density city, with an historic street grid that is as abstract as it is universal. The urban centre lacks a

cohesive, structured feeling, instead it offers a series of vivid experiences such as: the wharf, the weir and lock, the Sandbar Pub, Stefano's Restaurant, the Arts Centre and Rio Vista house. These islands of intensity derive their memorability by marshaling their distinct scenographic, historical, cultural and formal qualities in particular ways. Instead of a grand master-plan, we propose to create a series of contained and highly evocative projects that offer new anchoring experiences through which Mildura can grow.



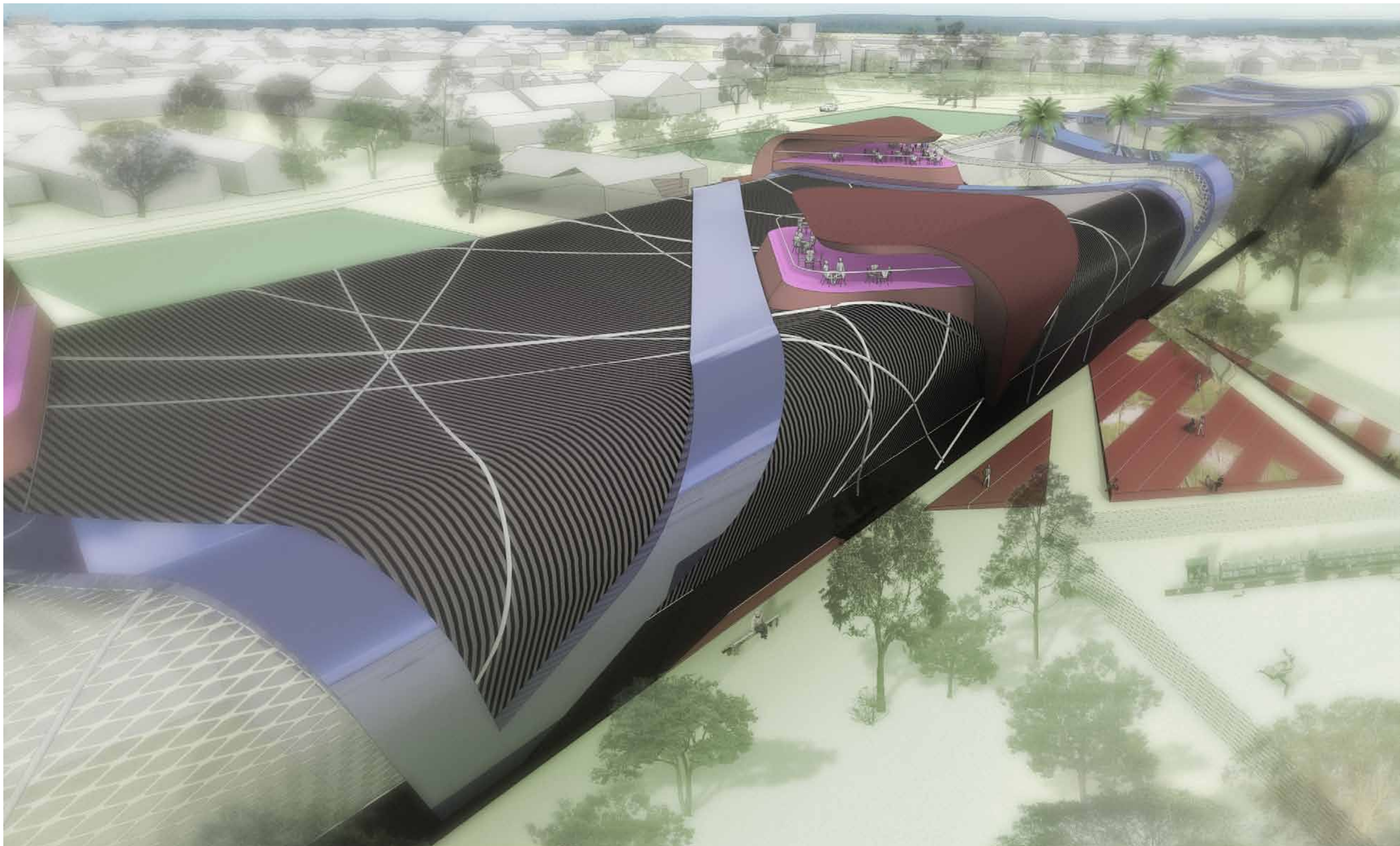
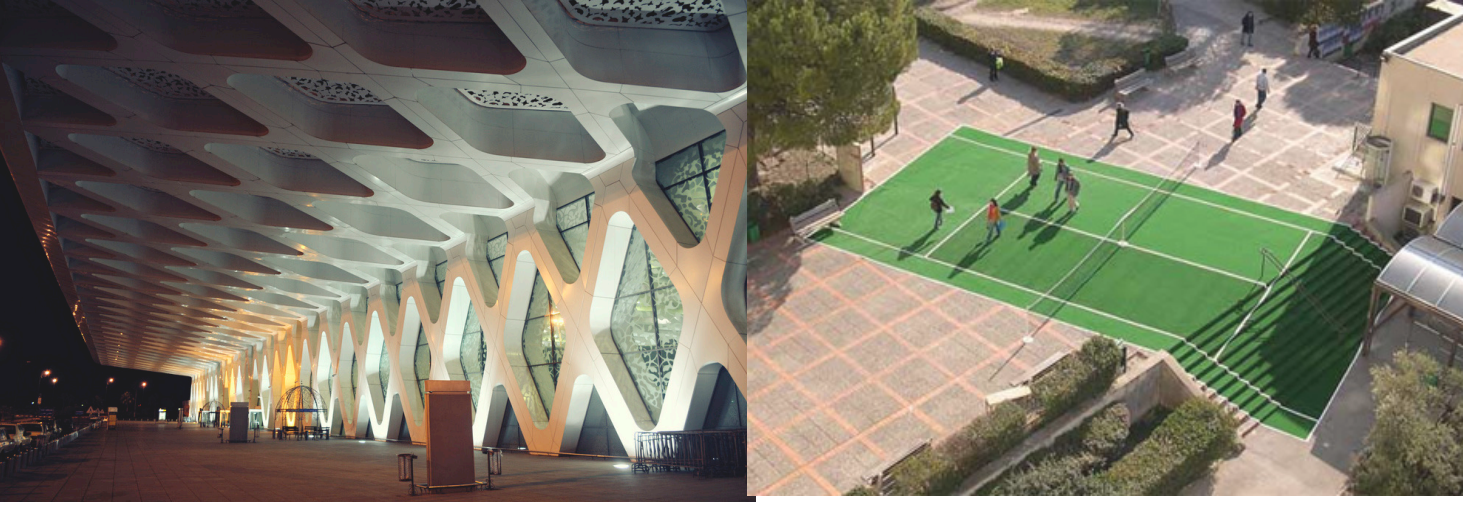
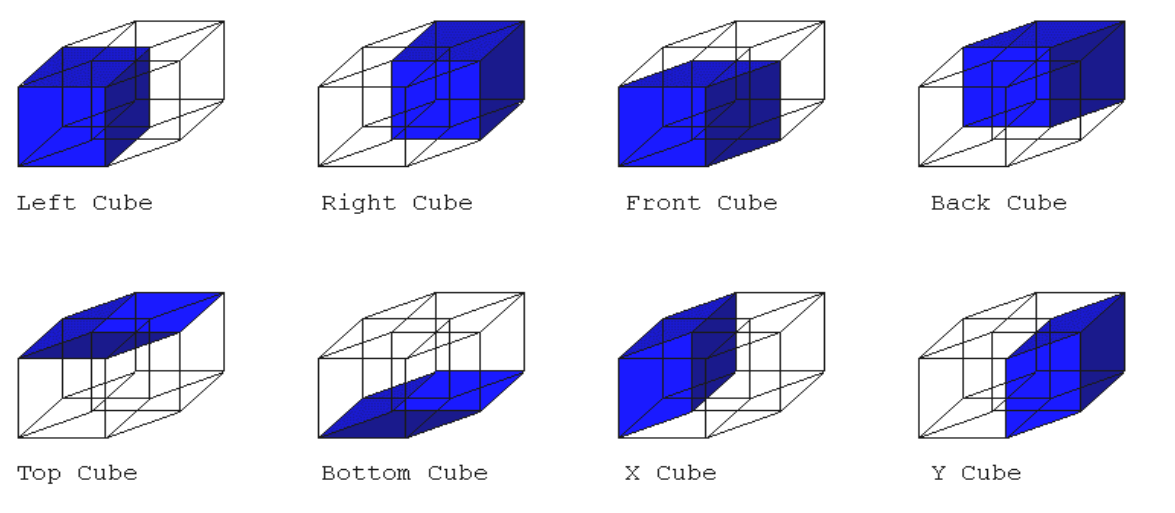
GRC 3.

july 2010 - category errors.

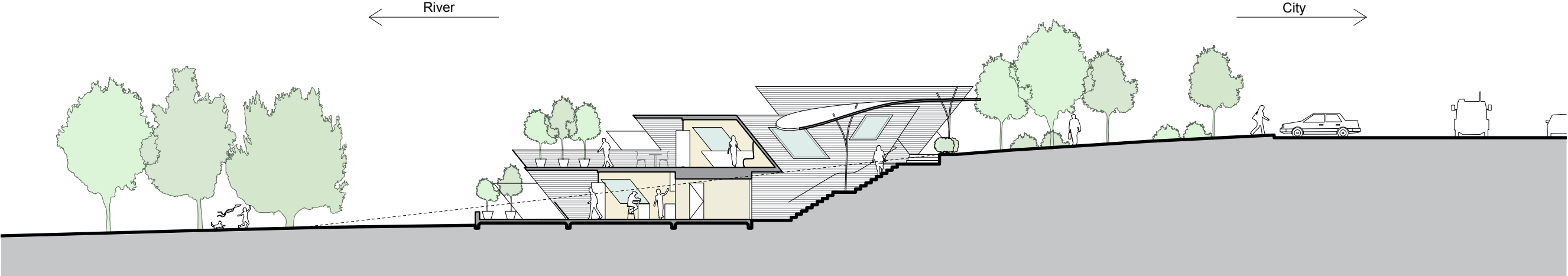
The Keys to Mildura.

Oases peppered across the urban landscape re-framing Mildura as a retreat, an island resort and orchard and a sporting paradise.

EMOH RUO  
EMOH RUO



Rural City Retreat



Scale 1:200



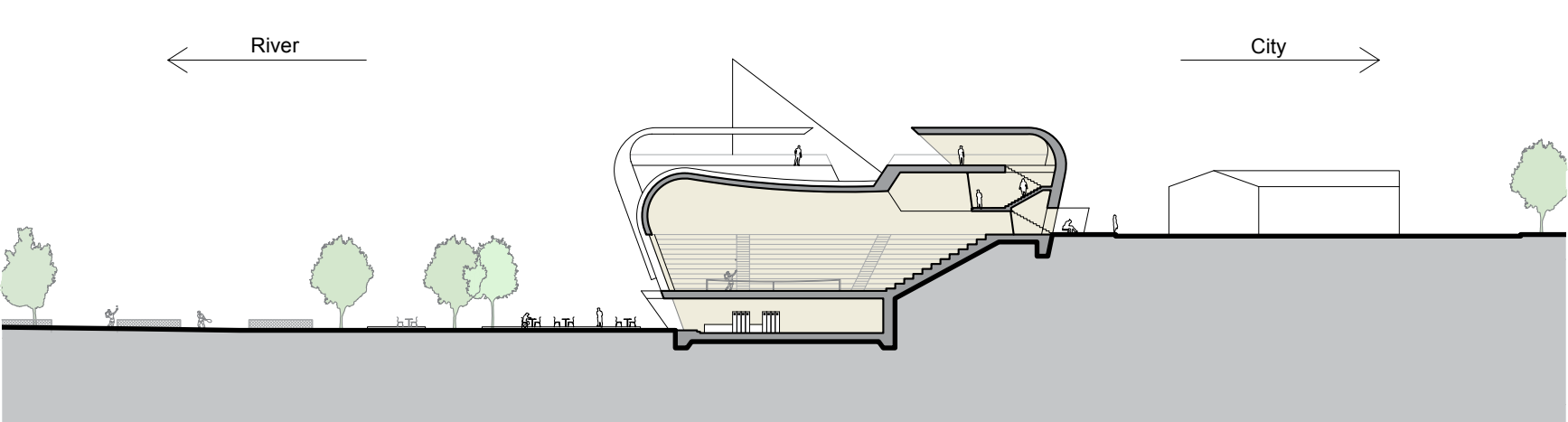
Scale 1:500

At present there is a serious lacAs Mildura's tertiary sector becomes more important, it becomes important to attract and accommodate visiting professionals for medium term stay. Examples: La Trobe University campus has many visiting academics staying for periods up to a semester, and the hospital needs to attract medical professionals. We propose a collegiate retreat of clusters of apartments, built into the river escarpment. Arranged as bundles feeling their way into the flood-plane, the buildings form a new edge to the city, mediating between the landscape realm of the river and the civic realm above. They are not unlike a cluster of houseboats moored at the rivers edge. Communal facilities provide a convivial environment for guests, and seminar facilities provide a place of knowledge exchange with the town.



Moored house boats.

Sports Spine



Scale 1:500



Scale 1:1500

Sport is an important aspect of Mildura's social fabric. Australian rules and Association football, tennis, basketball and bowls all have keen participation. The sports grounds lie in a key position between river and city. We propose a new Sports Spine between the tennis and bowls club, to act as a focus for Mildura's sporting life, and accommodate visitors to major events. It accommodates climate controlled indoor sports courts, cafes, restaurants and a function hall. Formally, the building is a long roof structure echoing the ridge-line it follows. The structure is modulated to accommodate landscape features, existing facilities and new program. The Sports Spine operates at the scale of the landscape, offering a new appreciation of the city in front and the river beyond.

**Weir Loop**  
The weir and lock system, developed to modulate River Murray flows for irrigation and make it navigable, was constructed during the 1930s. An impressive piece of infrastructure, it makes visible the forces of the river and their harnessing for agriculture. We propose to make it possible to cross the river at the weir. To appreciate the majesty of the river, certainly, but also to make possible a recreational circuit from Mildura riverfront, across the lock then weir, along the riverfront on the New South Wales side of the river, then returning over the Chaffey Bridge.

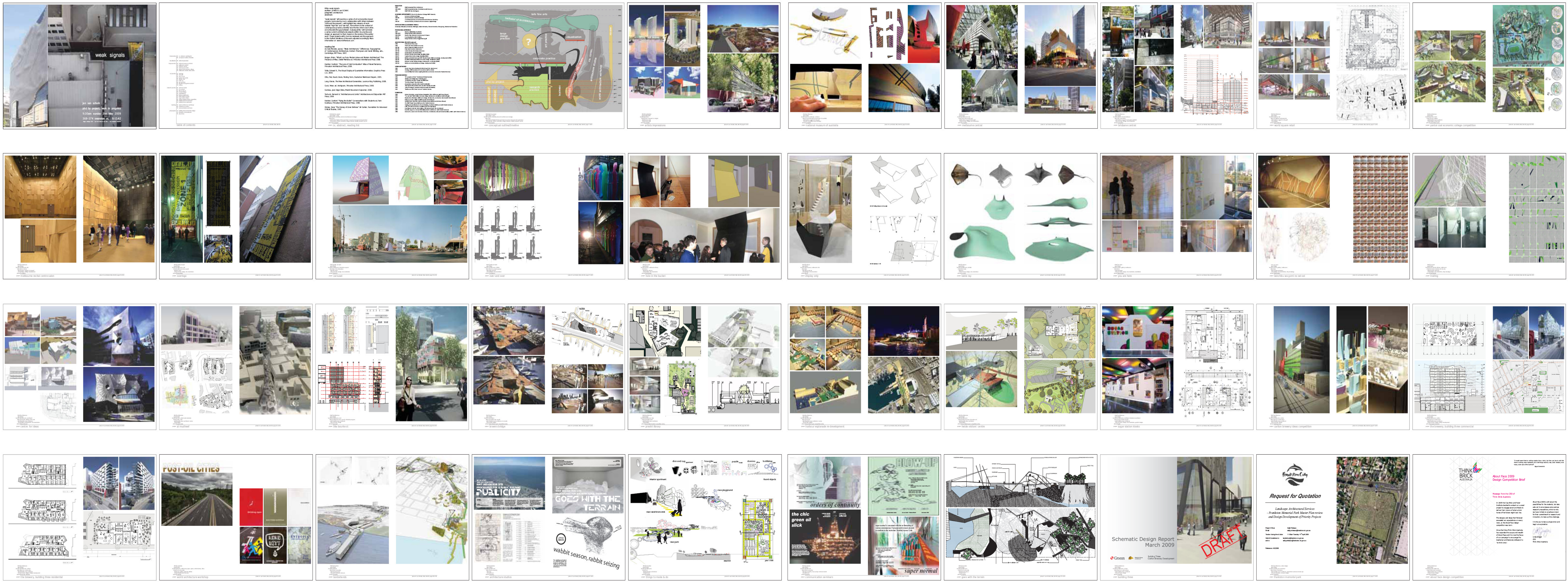


A Sports Space we like.



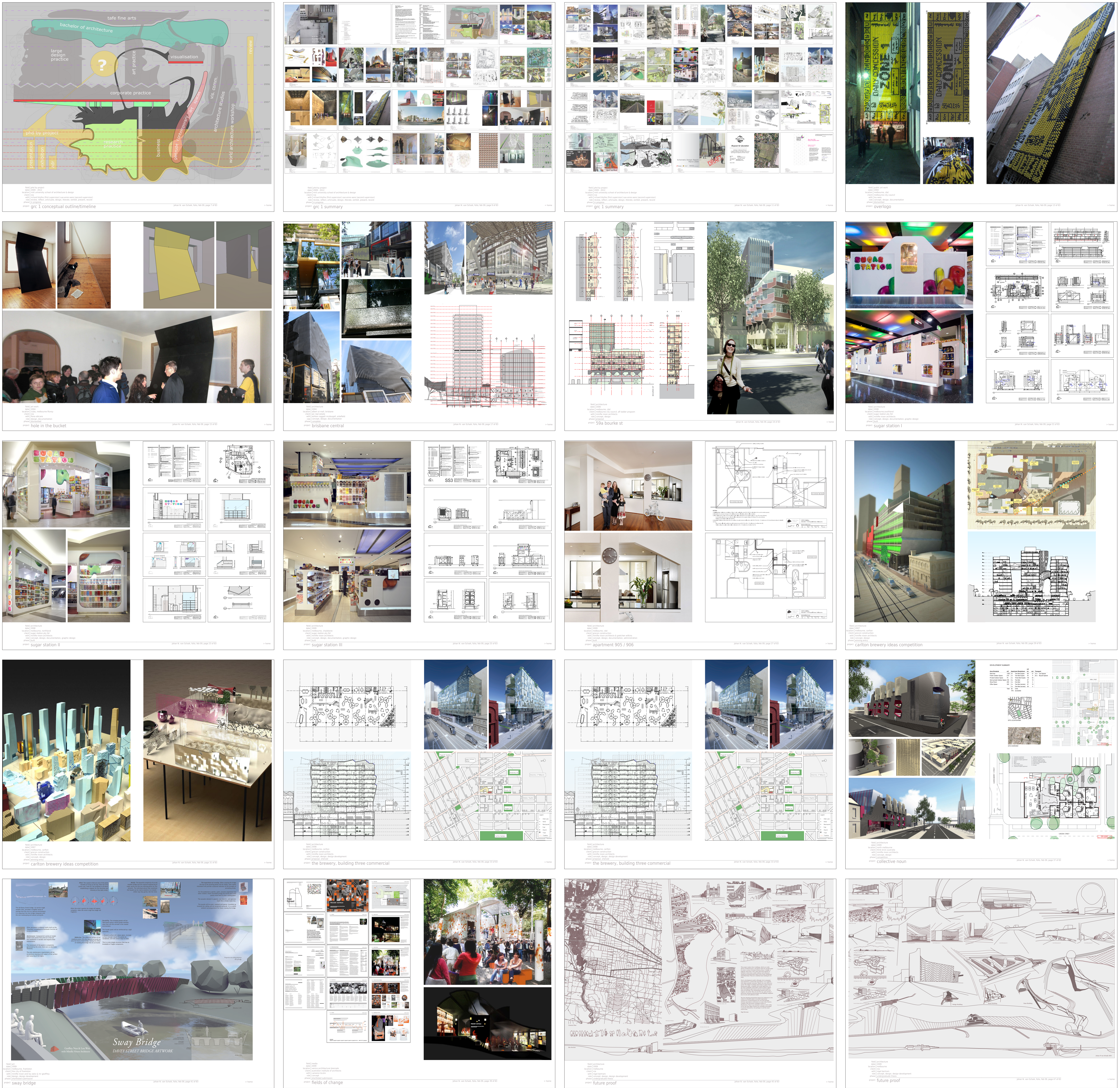




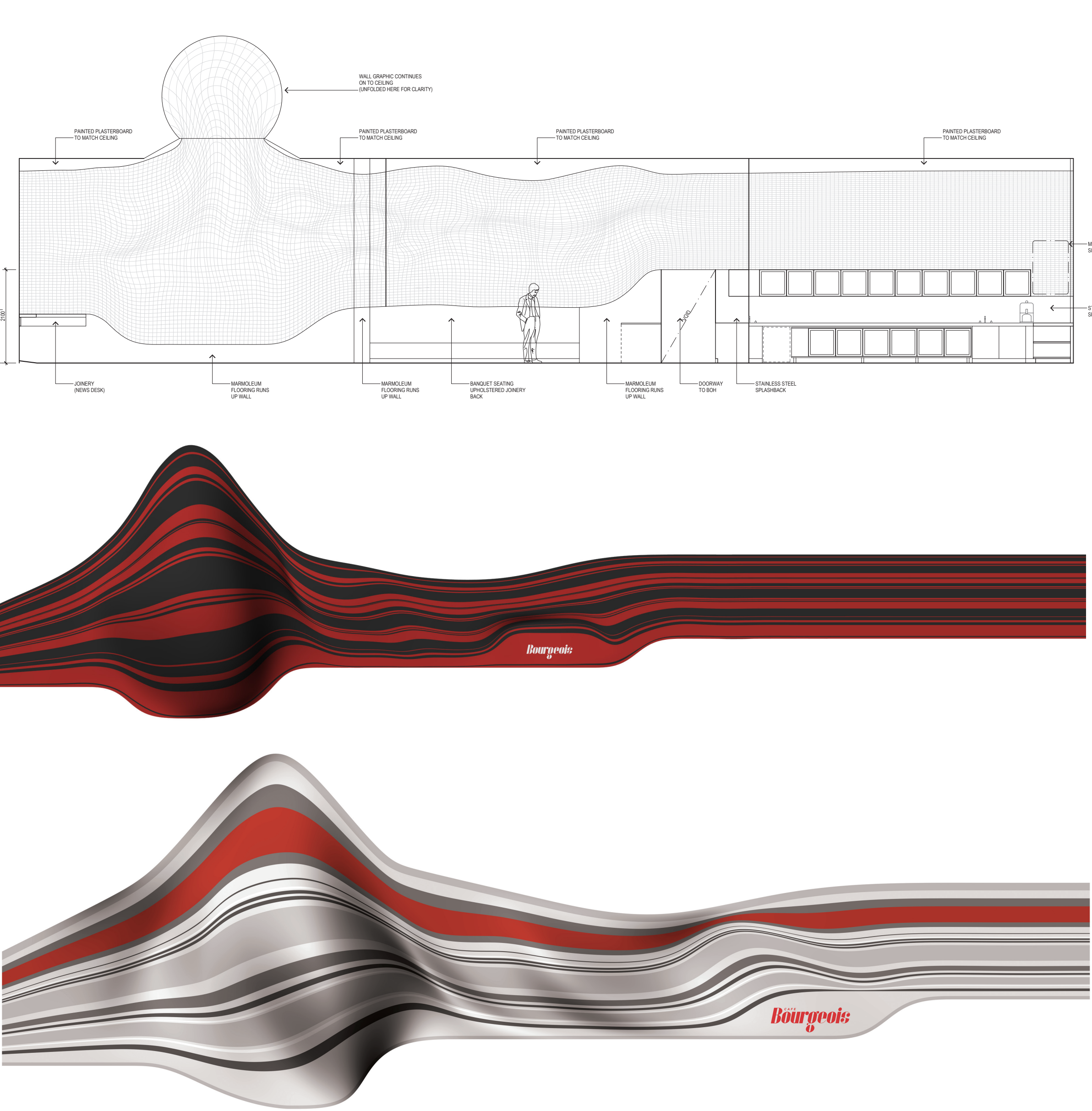
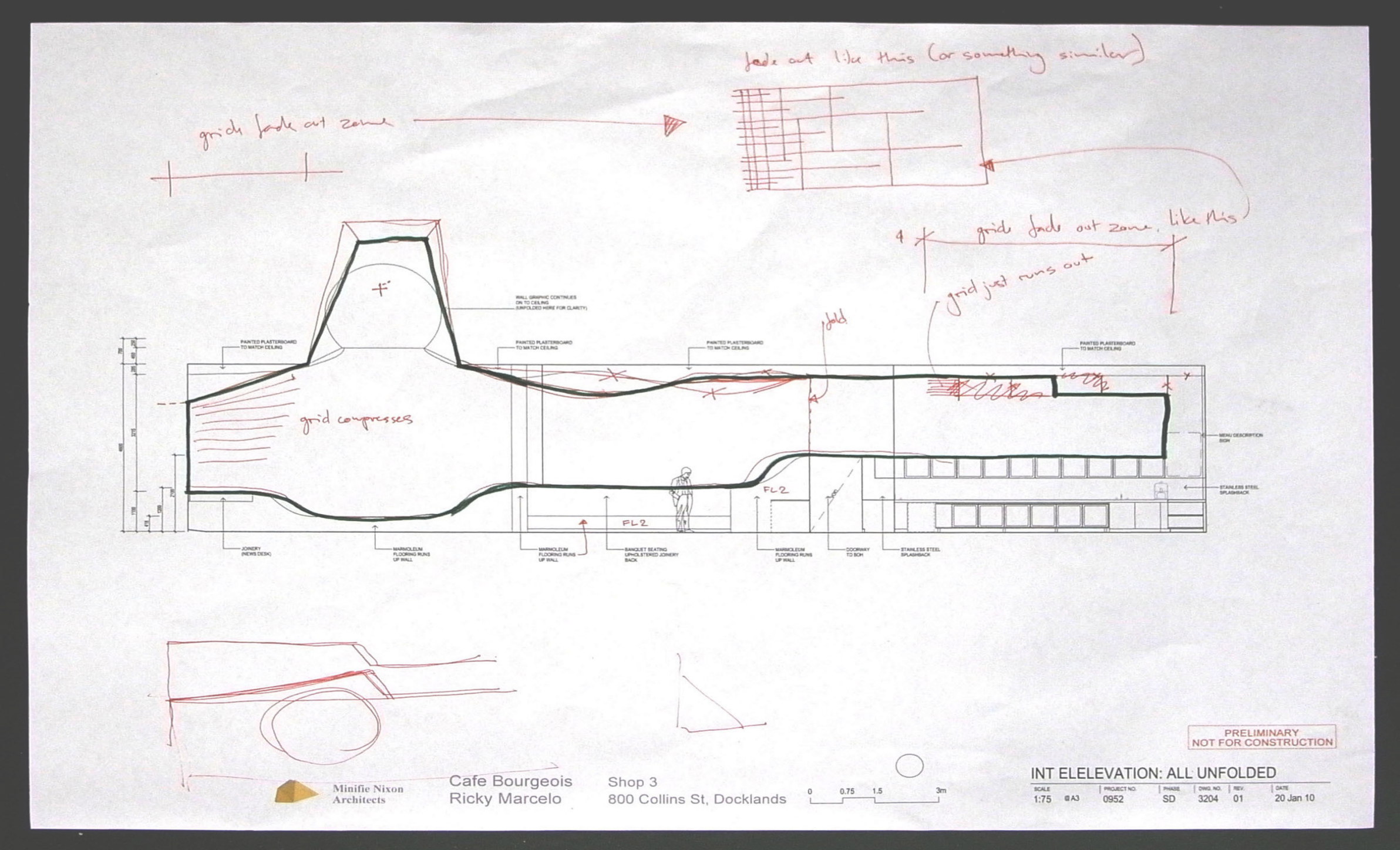


**GRC 1.**  
july 2009 - weak signals.

**GRC 2.**  
october 2009 - weak signals in an eclectic field somewhere between background noise and a blue sky.







**GRC 3.**  
july 2010 - category errors.  
**Cafe Bourgeois**  
An idealised other dimensional space is flattened to the wall of the cafe.

Cafe Bourgeois is located in the suddenly urban docklands area adjacent to the front door of the new BVN Myers building.

The cafe identity and architecture are entwined, the spatial gymnastics implied by the wallpaper mirroring the ironic ambitions of the franchise name.

This idealised three dimensional space imprints on the cafe walls an other worldly quality - a backdrop for glowing displays and the relentless warmth of the polished joinery end-grain, and the resilient reception of the rich Marmoleum colours underfoot.

